

COMPANY REGISTRATION NUMBER: 05077777
CHARITY REGISTRATION NUMBER: 1108714

**Faithworks Wessex
Company Limited by Guarantee
Financial Statements
31 March 2018**

HARRISONS

Chartered Accountants and Independent Examiner
4 Brackley Close
Bournemouth International Airport
Christchurch
Dorset
BH23 6SE

Faithworks Wessex
Company Limited by Guarantee
Financial Statements
Year ended 31 March 2018

	Page
Trustees' annual report (incorporating the director's report)	1
Independent examiner's report to the trustees	10
Statement of financial activities (including income and expenditure account)	11
Statement of financial position	12
Notes to the financial statements	13
The following pages do not form part of the financial statements	
Detailed statement of financial activities	23
Notes to the detailed statement of financial activities	25

Faithworks Wessex
Company Limited by Guarantee
Trustees' Annual Report (Incorporating the Director's Report)
Year ended 31 March 2018

The trustees, who are also the directors for the purposes of company law, present their report and the unaudited financial statements of the charity for the year ended 31 March 2018.

Reference and administrative details

Registered charity name Faithworks Wessex

Charity registration number 1108714

Company registration number 05077777

Principal office and registered office 125 Alma Road
Bournemouth
Dorset
BH9 1DE

The trustees

Mrs Dawn Cutherbertson
Mr Benjamin Griffiths
Mrs Jacqueline Leswell
Mr Cliff James
Dr Ian Bromilow
Mr Stephen Robinson
Mr Neil Stevens (Appointed 6 July 2017)

Company secretary Dr I Bromilow

Independent examiner Harrisons Chartered Accountants
4 Brackley Close
Bournemouth International Airport
Christchurch
Dorset
BH23 6SE

Our Aims and objectives

Faithworks Wessex (FWW) is a registered charity working across the conurbation of Poole, Bournemouth, Christchurch and the surrounding area. The trustees agreed a new vision statement at this year's strategy day, namely:

Strap-line: "Crisis relieved... Life transformed"

Vision (Desired outcome): Individuals find freedom from relational and financial despair, and rebuild their self-confidence to "live life in all its fullness".

Mission: FWW is a Christian charity that builds partnerships with churches and others in the community to run practical, local projects in urban Dorset that equip people to climb out of crisis and make life-enhancing choices. In particular, we want every individual in crisis in urban Dorset to be within 15 minutes of crisis help, every volunteer to find a bespoke role in Faithworks, and every local church to be equipped to reach their community with practical and Godly hope

As a faith-led organisation, FWW will always seek to act in accordance with our Christian ethos, which includes serving all regardless of their circumstances or beliefs. We are working with many partners, and are particularly successful in inspiring and enabling churches to identify and then meet the needs of their local communities.

Faithworks Wessex
Company Limited by Guarantee
Trustees' Annual Report (Incorporating the Director's Report)
Year ended 31 March 2018

Charitable purposes

The charity's purposes in the governance documents are:

“The relief of financial hardship, sickness or distress, particularly amongst the elderly, homeless, children and young people in care and those caring for a family member with a physical, mental or sensory disability, by the provision of information, advice and support and to provide or assist in the provision of facilities in the interests of social welfare for recreation or other leisure time occupation of individuals who have need for such facilities by reason of their youth, age infirmity of disability, financial hardship or social circumstances with the object of improving their condition of life in particular through facilitating churches and Christians to work for the benefit of their local communities by addressing such issues of disadvantage, social exclusion and other areas of need for the public benefit in such parts of the united kingdom as the directors from time to time may think fit.”

The focus of our work

In practice, FWW's work is in 2 specific areas of undiminished need:

A. Relieving Material Crisis

- Demand continues to increase at Foodbanks (Poole FB up 40% in 2 years)
- Bournemouth is one of the top 10 of least affordable towns
- Demand for debt advice is still high (at least 18 referrals per month)
- The official Bournemouth rough sleeper count increased again (48)

B. Relieving Social Isolation

- The Red Cross named Poole as one of the worst areas for loneliness
- Over 85's is fastest growing age group locally; 10% of the population are carers
- AgeUK reported that 40% of over 75's say the TV is their only friend
- Social prescribing service has waiting lists for befrienders of every age

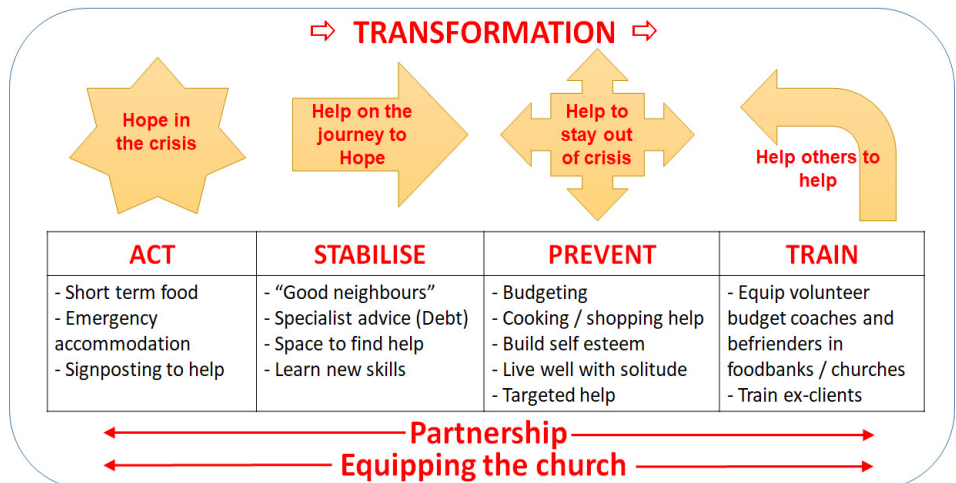
FWW continues to focus its work on those who are facing crisis at key transition points of life: rough sleepers, those in debt or financial confusion, those in immediate material crisis (food), unpaid carers, lone parents, and those escaping domestic abuse.

How our activities deliver public benefit

This report demonstrates the activities that the charity has provided in the past year, and how those have benefited some of the most vulnerable people in our community, thereby demonstrating the “public benefit” of the charity.

Strategic impact and direction

Approach: Our approach remains the same – to help people in their moment of crisis, to walk alongside them out of that crisis, and then to equip them to avoid future crisis (potentially, including training them to help others who are facing similar situations). This is now applied to all of our projects and has become a way of differentiating FWW from other local charities.



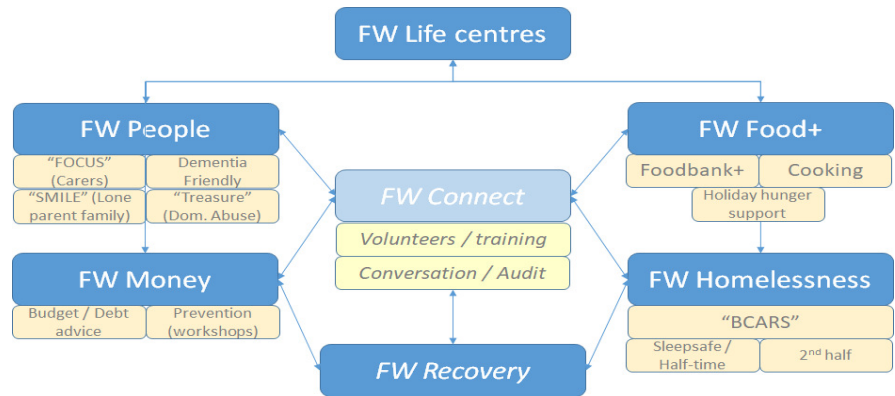
Faithworks Wessex

Company Limited by Guarantee

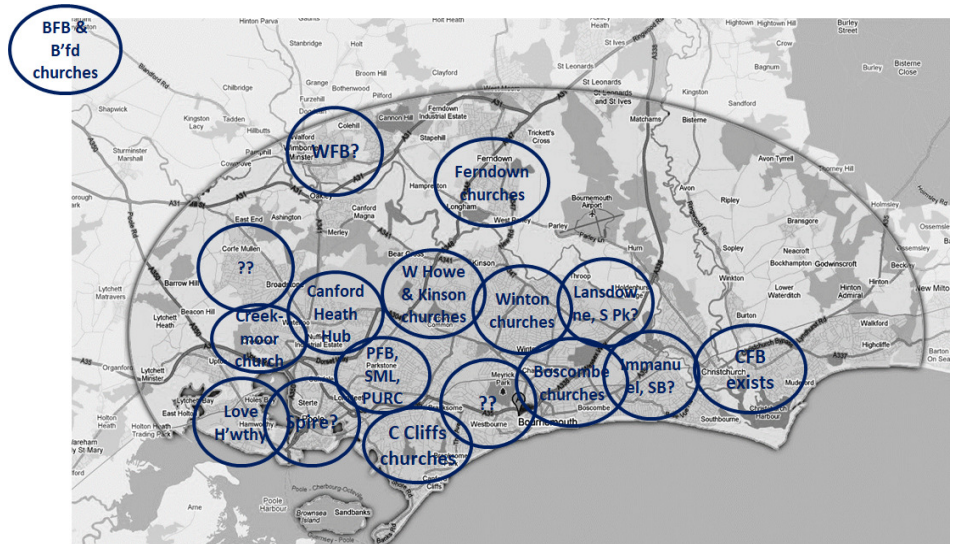
Trustees' Annual Report (Incorporating the Director's Report)

Year ended 31 March 2018

Offering: Faithworks is becoming more clearly known for its Food, Finance, Homelessness and People projects. This year, we will add a Recovery programme, initially to bring together and map all the work that is being done in and at church venues (like the initial work to establish BCARS). All of FWW's work is supported by the Connect team who train volunteers, link faith and other sectors, and ensure great communications.



Long term dream: Our overall goal above of making sure there is somewhere within a mile for every-one to get crisis help and find a “supporter”. This is what it would take to cover the map of urban East Dorset. We have already got Christchurch Foodbank+ in place, and Canford Heath hub has started; churches in West Howe and Kinson have created a joint leaflet outlining their community activities. And Blandford foodbank+ has a strong debt advice team, and this is leading to fruitful discussions with all the local churches.



Real change for real people

The highlights of our year are shown in our 2017 impact review, but here are some specific outcomes to back up the strategic changes outlined above:

FW Money: more than 20 people are now debt free or managing their debt. One client rang the office to say that they had a Council tax debt and the bailiffs had been in once and expected to come again; our finance lead talked the client through setting up a Standing Order for what they could afford; having done that we called the bailiffs and they agreed that they didn't need to come back again – relief for the client in just 2 hours.

FW Home: 60 people accessed the Sleepsafe emergency beds programme last winter and more than 70% of them (43 people) used this as a successful step into more secure accommodation – the highest level ever; (120 volunteers and 10 churches directly involved, £43,000 in funds raised specifically for that project, estimated saving to the public purse of £100,000+).

Faithworks Wessex
Company Limited by Guarantee
Trustees' Annual Report (Incorporating the Director's Report)
Year ended 31 March 2018

“To me dear friends at Sleepsafe and all the volunteers; I would like to offer my sincere thanks and gratitude. When I was sick you comforted me, when I was hungry you fed me, when I was tired you gave me rest, when I was lost you found me. All these things you did helped me recover from my addiction, so I am sending you this card as a thank you for all you did and continue to do... I now live at my sister's house until I can get my own place and remember each and every one of you fondly and will never forget you...”

FW Food+: All 5 of our foodbanks have now linked in with local schools to provide those who normally get free school meals with top vouchers: last summer more than 250 families were helped. Cooking courses now running in two of the foodbanks

FW People: Some of our longest serving volunteers work for our FOCUS project befriending cares – we honoured 15 of them at FWW's first long service awards event; our Domestic abuse support project (Treasure) helped 34 people in the last year to rebuild their self-esteem with 3 now volunteering, 9 using the crèche and 3 referred to the women's refuge; the SMILE lone parent fair was the biggest so far (48 families). And we successfully exited our older people's contract

FW Connect: We have also used our excellent reputation and networking to drive forward the Poole Conversation actions and bring at least 5 partnership projects into being: Hope in the Community is helping over 40 churches reach out to the isolated over 65s in their community; Town Pastors' teams are now in operation on Saturday evenings/nights in the two towns; www.streetsupport.net is the one-stop shop for information on all the help that is available locally for the homeless.

Facilitating change through partnerships and influence

Again this year, FWW has been at the forefront of driving forward several partnership opportunities that both enable us to grow the number of people that we impact, and also to jointly develop transformational ideas that are changing the towns we work in:

- FWW CEO chairs both the Bournemouth Homelessness Collaborative, and its key project, the Street Support network. This group of at least 14 agencies has drawn up a charter of joint working to reduce rough sleeping in the town, has agreed the standards that we will all work to, and has run joint publicity campaigns to help the public see that there is a lot of activity on the ground despite the growing number of rough sleepers – all of which would have been impossible on our own;
- www.streetsupport.net was successfully launched in October with 60+ reps from across all sectors attending a simple introduction at the central Library – this system is now the primary tool for not only giving rough sleepers information on the help that is available, but is starting to be used by the public to offer specific help. FWW's bid writing team have successfully brought £17.5k of funding to this project to help it launch. This not only helps the town but provides a platform for the FW/BCARS work to be recognised alongside other initiatives for this high priority issue in the town.
- The Poole Conversation continues to produce results and encourage similar activities elsewhere. Although the driver for the original Conversation was Churches Together in Poole, the FWW CEO chairs the meetings of the sub-group that is following up on the Conversation actions. We ran a different type of campaign this last year called “Great Neighbourhoods” – the aim was to showcase great examples of “neighbourly” streets, businesses and community groups, that bring people together and make people feel valued. We had 41 nominated projects and ran “Poole Conversation 2” at the University to tell their stories and link them together – they included a street where local residents have created their own recycling group, a choir of those impacted by cancer, a health walking club inspired by one GP, and examples of community cafes where people are known by name; the local police inspector said that he was going to change the way that his PCSO's engaged with local people – rather than running area forums where the same people always turned up, he was going to get them to go to the showcased groups as they were bringing together ordinary people committed to improving their locality or bringing hope to often hidden lives.

Faithworks Wessex
Company Limited by Guarantee
Trustees' Annual Report (Incorporating the Director's Report)
Year ended 31 March 2018

- And the Town Pastor teams in Bournemouth and Poole that FWW provides back-office services to, both continue to grow, and maintain their excellent reputation with the statutory authorities.

Financial Review

Income & Funding

The charity has been blessed with a range of grants that has allowed our project areas to flourish, included the following in this last year, for which we are very grateful:

Valentine Trust	Core, BCARS, SMILE, Blandford Foodbank	£28,000
Tudor Trust	Core: year 2 of 3	£25,000
Alice Ellen Cooper Dean foundation	Core, BCARS, Blandford & Christ-church Foodbanks	£23,000
RBS Skills & Opportunity fund	Money Matters: yr. 2 of 2	£15,000
Lloyds Foundation – Enable scheme	BCARS (2nd half)	£15,000
Incorporated Bournemouth Free Church Council	BCARS, Dementia work	£13,000
Swire foundation	BCARS	£10,000
Joseph Rank Trust	BCARS: year 2 of 3	£10,000
Awards for All (Big Lottery)	SMILE	£5,280
Ross Foundation	BCARS (Sleepsafe)	£5,000
Heart of Experian Foundation	Money Matters	£4,900
Clara E Burgess foundation	SMILE	£4,000
Safer Dorset Fund	BCARS (2nd half)	£3,000
Souter Charity	BCARS (Half-time)	£3,000

Plus at least 15 other grants of £2k or less

The total grant income in the year was in excess of £206,000 (in line with previous year) thanks to the team work of the CEO and the fundraising officer.

Income from fees rendered dropped substantially (£43.8k) due to the end of the Council contract for COMPASS, and the end of projects supported by Skills & Learning (volunteer management), and Dorset CCG (Hamworthy)

However, thanks to additional income from donations (up £20k including significantly increased on-line giving), and fundraising efforts for partner projects (Hope in the Community and Street Support), total gross income was only down by 2.5% at £394,191.

Reserves Policy

As part of its Christian ethos, Faithworks Wessex (FWW) is committed to an openness and integrity with regard to its finances. Therefore, it seeks to ensure that it works within an appropriate level of financial reserves.

"Reserves" is taken to describe that part of a charity's funds that are freely available to fund its general operations and so is not subject to commitments, planned expenditure or other restrictions. Consequently, Reserves do not include endowment funds, restricted funds and designated funds.

In the Trustees' view, the reserves should provide the charity with cover for redundancy and payment of its contractual requirements should the charity have to be wound up.

Faithworks Wessex
Company Limited by Guarantee
Trustees' Annual Report (Incorporating the Director's Report)
Year ended 31 March 2018

The trustees propose to grow the charity's unrestricted reserves to a level which is at least equivalent to three months operational expenditure – currently this would be £14,500 (the value of redundancy to non-project staff and 3 months' notice for office, utilities and printer).

It is the desire of the trustees to take into account the costs of moving vulnerable service users on to alternative services or a period of wind-down over 3 months; therefore, the growth in reserves is important.

The trustees review the amount of reserves that are required to ensure that they are adequate to fulfil the charity's continuing obligations every year as part of their budget planning. The level of unrestricted reserves shown in these accounts is £8.3k but the trustees have sought to separate out the costs of volunteer support work (a designated fund) without which the unrestricted reserves would be £13.8k, in line with the reserves target.

Expenditure

Expenditure this year was £413,415, an increase of 4.7% compared to 2016-17.

The main changes in costs this year come from the following:

- The total expenditure this year includes £11.75k of grant income that the FWW fundraising team have brought in and then transferred across to partner projects to help with their development (e.g. Street support and Hope in the Community)
- Overall salaries increased by £30k but activity costs dropped by £27k: last year Sleepsafe workers were provided externally, but in 2017-8 they were employed directly. Note that all staff received a 1.5% pay increase; there were 2 new starters in BCARS to drive forward the 2nd half and Half-time projects, but 1 leaver from the COMPASS project.
- Gifts and grants for individuals increased by £2k because of an increased number of Acts435.co.uk crowdfunding requests but this is netted off against an increase in income received for these specific requests
- A contract with a local book-keeping service has now been set up to reduce the risk of all of the financial work being on the treasurer's shoulders – this has increased professional fees by £3.3k
- There was an increase in equipment and materials costs (£10k) due to Sleepsafe requirements and an increased depreciation charge because of new laptops;
- However, there were reductions in spend on telephones (-£800 (20%) thanks to better deals on mobile phones), volunteer training (-£4k thanks to more trainers not charging especially for Sleepsafe), publicity (-£1.7k), refreshments (-£1.3k), and postage (-£500 thanks to new franking machine)

Fundraising costs account for no more than 2% of total costs; equally Governance costs are also less than 2% of total spend

Support costs are constantly reviewed to identify alternatives to minimise spend. An opportunity to move into a cheaper (-£1.6k per annum) and more central office has been identified with a local church and this will be progressed later in 2018.

Note that the figures also include £19.9k of management fees transferred from projects back to the centre to pay for support costs; this is also included in the income side. Note that in the regular weekly book-keeping, such transfers are netted off rather than taken as a gross figure.

Overall

There was a £19k deficit on the year in total; however, after last year's surplus, FWW has seen a drop of only £9k over these 2 years which as grant funding becomes more competitive is a sound performance.

Faithworks Wessex
Company Limited by Guarantee
Trustees' Annual Report (Incorporating the Director's Report)
Year ended 31 March 2018

Aims for forthcoming year

At the start of 2017, the trustees set the target of doubling the number of people that we help whether that be directly or via equipping others – the number grew by 10% in 2017.

The objectives for the coming year seek to develop the FWW vision in 4 ways (with their immediate actions:

- A. Establishing “Life centres” to help people stay out of crisis
- A1. Complete and submit a stage 2 application for Big Lottery funding based around developing an approach that uses the principles of the “Conversation” to understand the elements that a life centre needs to have to meet the needs of a particular area. The bid will also seek to provide sustainable funds for existing FW activity including debt advice and project support for the CEO’s networking work.
 - A2. Meanwhile, we will seek to develop a “local life centre” approach in each of the FW foodbanks – esp. in Wimborne (with new coordinator) and Blandford (possibly including a town-wide conversation led by the Parish church). We will work with existing church contacts esp. Canford Heath hub to develop exemplars of “local life centres” in action.
 - A3. We will also further develop the offering for a church looking to reach its community with appropriate costings and with extra input to building the Spiritual mission element
 -
- B. Enhancing the menu of support that each life centre could use, including Recovery support
- B1. We will enhance FW’s “offering” (and use the contacts that the Operations Manager already has with Recovery2) by creating a programme of addiction recovery work under the banner of “FW Recovery” (see detail on page 13)
 - B2. We will turn the Poole Conversation experience into a defined and replicable approach that can be used in other towns and areas; if funding can be found, we will deliver this in Blandford
 - B3. We will review and relaunch SMILE, including much closer links with local churches
- C. Creating a network of “supporters”/mentors (trained for specific client-areas)
- C1. We will implement “supporter” teams in BCARS and CFB: i.e. Church teams that come alongside ex-rough sleepers as they get off the street to help reduce the likelihood of them going back to the street. A formal link will be established with Hope into Action to ensure that these teams have good training and knowledge of housing related issues. If successful, we will look to expand these teams to support every foodbank+
- D. FW’s future development depends on two key issues to ensure sustainability: How do we make FWW better known, and how do we broaden our fundraising base? Therefore, we are seeking to raise the profile of FWW:
- D1. We will increase the number of mission partner churches
 - D2. We will run a signature event(s) that becomes an annual public looked-for date
 - D3. We will increase the opportunities for others to run funding events for us
 - D4. And we will look for a shared church office base that will allow us to have a “this is Faithworks” venue

Faithworks Wessex
Company Limited by Guarantee
Trustees' Annual Report (Incorporating the Director's Report)
Year ended 31 March 2018

Governance & internal Controls

Trustee team

Neil Stevens, the manager of the Holton Lee site for national charity Livability, was invited and accepted the opportunity to join the trustee board of FWW. His experience previously running the trading arm of a Christian fair-trade charity, and his input into the development of the Poole Conversation work will be invaluable.

The other six trustees are: Ian Bromilow (chair), Dawn Cuthbertson (vice-chair), Cliff James (treasurer), Ben Griffiths, Steve Robinson and Jackie Leswell.

The trustees meet every 2 months to review the progress of the work, including the scale of operations, the financial position and any significant personnel/infrastructure issues; additional cash flow planning is shared as required. At each meeting the CEO provides a status report, and the Treasurer provides details of expenditure, fundraising progress and updates on activities to increase regular support – in addition, the trustees have continued their rolling programme of policy review, taking an in-depth look at 2-3 key policies of the charity at each meeting so that all are covered every 2 years. The trustees and the CEO also set aside additional time to pray for and about the charity every two months.

The chair and CEO meet monthly to ensure the issues raised are being dealt with, and to identify and deal with any blockages. The CEO also sends out a weekly briefing to all staff and trustees to keep them informed of developments across the range of projects.

The treasurer and the CEO meet at least every four weeks to look at expenditure, ensure that bills are paid promptly, and identify any forthcoming costs to be considered.

As noted above, the charity provides financial support to other projects (e.g. Town Pastors), providing them with a monthly overview of their income and expenditure.

Risk management

The trustees have again undertaken a full risk review this year: the 3 most significant challenges were over-reliance on key people, the need to build our presence, and the need to grow core reserves.

Therefore, the trustees have ensured that the CEO has a business continuity plan in place to particularly cover the unplanned absence of the CEO or the treasurer. In particular, a book-keeper has now been employed to increase the team around the treasurer.

In addition, an internal audit of financial and safety practices has been done by the chair of trustees – this will be repeated each year to ensure that actions have been followed up, and risks to staff and volunteers reduced.

Faithworks Wessex as a “Going Concern”

Despite financial challenges across the sector, FWW can demonstrate that it has been, and continues to be, managed in a financially sound way:

- It is not over-reliant on one form of funding
- Each new project’s funding includes an element to cover central core costs
- It is building longer term relationships with key funders such as Tudor Trust, Rank Trust, Valentine and Cooper Dean.
- When staff leave, trustees review funding and options for the future shape of the team. It maintains liquid assets to cover at least three months of salaries;
- The auditor inspects the accounts annually and they are signed off without a problem each time.

Faithworks Wessex
Company Limited by Guarantee
Trustees' Annual Report (Incorporating the Director's Report) *(continued)*
Year ended 31 March 2018

Statement of trustees' responsibilities

Company law and charity law require the trustees to prepare financial statements for each financial year which give a true and fair view of the state of affairs of the company and of the surplus or deficit of the company for that year. In preparing those financial statements, the trustees are required to:

- Select suitable accounting policies and then apply them consistently
- Make judgements and estimates that are reasonable and prudent
- Prepare the financial statements on the going concern basis unless it is inappropriate to presume that the company will continue in business

The trustees are responsible for keeping proper accounting records which disclose with reasonable accuracy at any time the financial position of the company and enable them to ensure that the financial statements comply with the Companies Act 2006. They are also responsible for safeguarding the assets of the company and hence for taking reasonable steps for the prevention and detection of fraud and other irregularities.

Small company provisions

This report has been prepared in accordance with the provisions applicable to companies entitled to the small companies exemption.

The trustees' annual report was approved on 16 November 2018 and signed on behalf of the board of trustees by:

Mr Cliff James
Trustee

Dr I Bromilow
Charity Secretary

Faithworks Wessex
Company Limited by Guarantee
Independent Examiner's Report to the Trustees of Faithworks Wessex
Year ended 31 March 2018

I report to the trustees on my examination of the financial statements of Faithworks Wessex (the charity) for the year ended 31 March 2018.

Responsibilities and basis of report

As the trustees of the company (and also its directors for the purposes of company law) you are responsible for the preparation of the financial statements in accordance with the requirements of the Companies Act 2006 ('the 2006 Act').

Having satisfied myself that the accounts of the company are not required to be audited under Part 16 of the 2006 Act and are eligible for independent examination, I report in respect of my examination of the charity's accounts as carried out under section 145 of the Charities Act 2011 ('the 2011 Act'). In carrying out my examination I have followed the Directions given by the Charity Commission under section 145(5)(b) of the 2011 Act.

Independent examiner's statement

Since the charity's gross income exceeded £250,000 your examiner must be a member of a body listed in section 145 of the 2011 Act. I confirm that I am qualified to undertake the examination because I am a member of the Institute of Chartered Accountants in England and Wales (ICAEW), which is one of the listed bodies.

I have completed my examination. I confirm that no matters have come to my attention in connection with the examination giving me cause to believe:

1. accounting records were not kept in respect of the charity as required by section 386 of the 2006 Act; or
2. the financial statements do not accord with those records; or
3. the financial statements do not comply with the accounting requirements of section 396 of the 2006 Act other than any requirement that the accounts give a 'true and fair' view which is not a matter considered as part of an independent examination; or
4. the financial statements have not been prepared in accordance with the methods and principles of the Statement of Recommended Practice for accounting and reporting by charities applicable to charities preparing their accounts in accordance with the Financial Reporting Standard applicable in the UK and Republic of Ireland (FRS 102).

I have no concerns and have come across no other matters in connection with the examination to which attention should be drawn in this report in order to enable a proper understanding of the accounts to be reached.

Harrisons Chartered Accountants
Independent Examiner

4 Brackley Close
Bournemouth International Airport
Christchurch
Dorset
BH23 6SE

16 November 2018

Faithworks Wessex
Company Limited by Guarantee
Statement of Financial Activities
(including income and expenditure account)
Year ended 31 March 2018

		2018		2017	
	Note	Unrestricted funds £	Restricted funds £	Total funds £	Total funds £
Income and endowments					
Donations and legacies	5	88,848	249,745	338,593	304,944
Charitable activities	6	27,683	27,018	54,701	98,489
Other trading activities	7	476	–	476	886
Investment income	8	421	–	421	70
Total income		<u>117,428</u>	<u>276,763</u>	<u>394,191</u>	<u>404,389</u>
Expenditure					
Expenditure on charitable activities	9,10	118,733	294,682	413,415	394,784
Total expenditure		<u>118,733</u>	<u>294,682</u>	<u>413,415</u>	<u>394,784</u>
Net (expenditure)/income and net movement in funds					
		<u>(1,305)</u>	<u>(17,919)</u>	<u>(19,224)</u>	<u>9,605</u>
Reconciliation of funds					
Total funds brought forward		9,535	133,534	143,069	133,464
Total funds carried forward		<u>8,230</u>	<u>115,615</u>	<u>123,845</u>	<u>143,069</u>

The statement of financial activities includes all gains and losses recognised in the year.
All income and expenditure derive from continuing activities.

The notes on pages 13 to 21 form part of these financial statements.

Faithworks Wessex
Company Limited by Guarantee
Statement of Financial Position
31 March 2018

	Note	2018	2017
		£	£
Fixed assets			
Tangible fixed assets	16	5,188	6,714
Current assets			
Debtors	17	9,125	6,688
Cash at bank and in hand		<u>110,399</u>	<u>130,452</u>
		119,524	137,140
Creditors: amounts falling due within one year	18	<u>867</u>	<u>785</u>
Net current assets		<u>118,657</u>	<u>136,355</u>
Total assets less current liabilities		<u>123,845</u>	<u>143,069</u>
Net assets		<u>123,845</u>	<u>143,069</u>
Funds of the charity			
Restricted funds		115,615	133,534
Unrestricted funds		<u>8,230</u>	<u>9,535</u>
Total charity funds	20	<u>123,845</u>	<u>143,069</u>

For the year ending 31 March 2018 the charity was entitled to exemption from audit under section 477 of the Companies Act 2006 relating to small companies.

Directors' responsibilities:

- The members have not required the company to obtain an audit of its financial statements for the year in question in accordance with section 476;
- The directors acknowledge their responsibilities for complying with the requirements of the Act with respect to accounting records and the preparation of financial statements.

These financial statements have been prepared in accordance with the provisions applicable to companies subject to the small companies' regime.

These financial statements were approved by the board of trustees and authorised for issue on 16 November 2018, and are signed on behalf of the board by:

Mr Cliff James
Trustee

The notes on pages 13 to 21 form part of these financial statements.

Faithworks Wessex
Company Limited by Guarantee
Notes to the Financial Statements
Year ended 31 March 2018

1. General information

The charity is a public benefit entity and a private company limited by guarantee, registered in England and Wales and a registered charity in England and Wales. The address of the registered office is 125 Alma Road, Bournemouth, Dorset, BH9 1DE.

2. Statement of compliance

These financial statements have been prepared in compliance with FRS 102, 'The Financial Reporting Standard applicable in the UK and the Republic of Ireland', the Statement of Recommended Practice applicable to charities preparing their accounts in accordance with the Financial Reporting Standard applicable in the UK and Republic of Ireland (FRS 102) (Charities SORP (FRS 102)) and the Companies Act 2006.

3. Accounting policies

Basis of preparation

The financial statements have been prepared on the historical cost basis, as modified by the revaluation of certain financial assets and liabilities and investment properties measured at fair value through income or expenditure.

The financial statements are prepared in sterling, which is the functional currency of the entity.

Going concern

There are no material uncertainties about the charity's ability to continue.

Disclosure exemptions

The charity has applied Update Bulletin 1 as published on 2 February 2016 and does not include a cash flow statement on the grounds that it is applying small charity exemptions.

Judgements and key sources of estimation uncertainty

The preparation of the financial statements requires management to make judgements, estimates and assumptions that affect the amounts reported. These estimates and judgements are continually reviewed and are based on experience and other factors, including expectations of future events that are believed to be reasonable under the circumstances.

Fund accounting

Unrestricted funds are available for use at the discretion of the trustees to further any of the charity's purposes.

Designated funds are unrestricted funds earmarked by the trustees for particular future projects or commitments.

Restricted funds are subjected to restrictions on their expenditure declared by the donor or through the terms of an appeal.

Faithworks Wessex

Company Limited by Guarantee

Notes to the Financial Statements *(continued)*

Year ended 31 March 2018

3. Accounting policies *(continued)*

Incoming resources

All income is included in the statement of financial activities when entitlement has passed to the charity, it is probable that the economic benefits associated with the transaction will flow to the charity and the amount can be reliably measured. The following specific policies are applied to particular categories of income:

- income from donations or grants is recognised when there is evidence of entitlement to the gift, receipt is probable and its amount can be measured reliably.
- legacy income is recognised when receipt is probable and entitlement is established.
- income from donated goods is measured at the fair value of the goods unless this is impractical to measure reliably, in which case the value is derived from the cost to the donor or the estimated resale value. Donated facilities and services are recognised in the accounts when received if the value can be reliably measured. No amounts are included for the contribution of general volunteers.
- income from contracts for the supply of services is recognised with the delivery of the contracted service. This is classified as unrestricted funds unless there is a contractual requirement for it to be spent on a particular purpose and returned if unspent, in which case it may be regarded as restricted.

Resources expended

Expenditure is recognised on an accruals basis as a liability is incurred. Expenditure includes any VAT which cannot be fully recovered, and is classified under headings of the statement of financial activities to which it relates:

- expenditure on raising funds includes the costs of all fundraising activities, events, non-charitable trading activities, and the sale of donated goods.
- expenditure on charitable activities includes all costs incurred by the charity in undertaking activities that further its charitable aims for the benefit of its beneficiaries, including those support costs and costs relating to the governance of the charity apportioned to charitable activities.
- other expenditure includes all expenditure that is neither related to raising funds for the charity nor part of its expenditure on charitable activities.

All costs are allocated to expenditure categories reflecting the use of the resource. Direct costs attributable to a single activity are allocated directly to that activity. Shared costs are apportioned between the activities they contribute to on a reasonable, justifiable and consistent basis.

Tangible assets

Tangible assets are initially recorded at cost, and subsequently stated at cost less any accumulated depreciation and impairment losses. Any tangible assets carried at revalued amounts are recorded at the fair value at the date of revaluation less any subsequent accumulated depreciation and subsequent accumulated impairment losses.

Faithworks Wessex
Company Limited by Guarantee
Notes to the Financial Statements *(continued)*
Year ended 31 March 2018

3. Accounting policies *(continued)*

Tangible assets *(continued)*

An increase in the carrying amount of an asset as a result of a revaluation, is recognised in other recognised gains and losses, unless it reverses a charge for impairment that has previously been recognised as expenditure within the statement of financial activities. A decrease in the carrying amount of an asset as a result of revaluation, is recognised in other recognised gains and losses, except to which it offsets any previous revaluation gain, in which case the loss is shown within other recognised gains and losses on the statement of financial activities.

Depreciation

Depreciation is calculated so as to write off the cost or valuation of an asset, less its residual value, over the useful economic life of that asset as follows:

Fixtures & fittings	-	33% straight line
Equipment	-	25% reducing balance

Financial instruments

A financial asset or a financial liability is recognised only when the entity becomes a party to the contractual provisions of the instrument.

Basic financial instruments are initially recognised at the amount receivable or payable including any related transaction costs, unless the arrangement constitutes a financing transaction, where it is recognised at the present value of the future payments discounted at a market rate of interest for a similar debt instrument.

Current assets and current liabilities are subsequently measured at the cash or other consideration expected to be paid or received and not discounted.

Debt instruments are subsequently measured at amortised cost.

Pension costs

The company operates a defined contribution scheme for the benefit of its employees. Contributions payable are recognised in profit and loss account when due.

4. Limited by guarantee

The company has no share capital and is limited by guarantee.

Every member undertakes to contribute an amount not exceeding £10 in the event of the charity being dissolved.

5. Donations and legacies

	Unrestricted Funds £	Restricted Funds £	Total Funds 2018 £
Grants			
Grants - organisations	64,799	196,492	261,291
Grants - individuals	24,049	53,253	77,302
	<u>88,848</u>	<u>249,745</u>	<u>338,593</u>

Faithworks Wessex

Company Limited by Guarantee

Notes to the Financial Statements *(continued)*

Year ended 31 March 2018

5. Donations and legacies *(continued)*

	Unrestricted Funds £	Restricted Funds £	Total Funds 2017 £
Grants			
Grants - organisations	48,394	204,598	252,992
Grants - individuals	9,154	42,798	51,952
	<u>57,548</u>	<u>247,396</u>	<u>304,944</u>

The charity benefits greatly from the involvement of its many volunteers. In accordance with FRS 102 and the Charities SORP (FRS 102), the economic contribution of general volunteers is not recognised in the accounts.

6. Charitable activities

	Unrestricted Funds £	Restricted Funds £	Total Funds 2018 £
Income from charitable activities	<u>27,683</u>	<u>27,018</u>	<u>54,701</u>
	Unrestricted Funds £	Restricted Funds £	Total Funds 2017 £
Income from charitable activities	<u>35,895</u>	<u>62,594</u>	<u>98,489</u>

7. Other trading activities

	Unrestricted Funds £	Total Funds 2018 £	Unrestricted Funds £	Total Funds 2017 £
Fundraising events	<u>476</u>	<u>476</u>	<u>886</u>	<u>886</u>

8. Investment income

	Unrestricted Funds £	Restricted Funds £	Total Funds 2018 £
Bank interest receivable	<u>421</u>	<u>–</u>	<u>421</u>
	Unrestricted Funds £	Restricted Funds £	Total Funds 2017 £
Bank interest receivable	<u>58</u>	<u>12</u>	<u>70</u>

Faithworks Wessex

Company Limited by Guarantee

Notes to the Financial Statements *(continued)*

Year ended 31 March 2018

9. Expenditure on charitable activities by fund type

	Unrestricted Funds £	Restricted Funds £	Total Funds 2018 £
Charitable activities	86,399	244,460	330,859
Support costs	32,334	50,222	82,556
	<u>118,733</u>	<u>294,682</u>	<u>413,415</u>

	Unrestricted Funds £	Restricted Funds £	Total Funds 2017 £
Charitable activities	57,165	262,975	320,140
Support costs	36,049	38,595	74,644
	<u>93,214</u>	<u>301,570</u>	<u>394,784</u>

10. Expenditure on charitable activities by activity type

	Activities undertaken directly £	Support costs £	Total funds 2018 £	Total fund 2017 £
Charitable activities	330,859	75,779	406,638	391,850
Governance costs	–	6,777	6,777	2,934
	<u>330,859</u>	<u>82,556</u>	<u>413,415</u>	<u>394,784</u>

11. Analysis of support costs

	General support £	Governance costs £	Total 2018 £	Total 2017 £
Staff costs	–	2,500	2,500	2,000
Premises	20,103	–	20,103	20,259
General office	38,546	–	38,546	30,029
Motor and travel costs	10,487	–	10,487	10,935
Accountancy	–	817	817	784
Legal and professional costs	2,442	3,460	5,902	2,816
Training and subscriptions	4,201	–	4,201	7,821
	<u>75,779</u>	<u>6,777</u>	<u>82,556</u>	<u>74,644</u>

12. Net (expenditure)/income

Net (expenditure)/income is stated after charging/(crediting):

	2018 £	2017 £
Depreciation of tangible fixed assets	3,786	4,743

Faithworks Wessex
Company Limited by Guarantee
Notes to the Financial Statements *(continued)*
Year ended 31 March 2018

13. Independent examination fees

	2018	2017
	£	£
Fees payable to the independent examiner for:		
Independent examination of the financial statements	<u>817</u>	<u>784</u>

14. Staff costs

The total staff costs and employee benefits for the reporting period are analysed as follows:

	2018	2017
	£	£
Wages and salaries	242,733	216,625
Social security costs	9,122	7,351
Employer contributions to pension plans	10,543	8,699
	<u>262,398</u>	<u>232,675</u>

The average head count of employees during the year was 26 (2017: 24).

No employee received employee benefits of more than £60,000 during the year (2017: Nil).

Key Management Personnel

Key management personnel include all persons that have authority and responsibility for planning, directing and controlling the activities of the charity. The total compensation paid to key management personnel for services provided to the charity was £65,260 (2017:£64,937).

15. Trustee remuneration and expenses

None of the trustees received any remuneration for their services or reimbursement of expenses during either the current or previous year.

16. Tangible fixed assets

	Fixtures and fittings	Equipment	Total
	£	£	£
Cost			
At 1 April 2017	13,261	13,766	27,027
Additions	–	2,260	2,260
At 31 March 2018	<u>13,261</u>	<u>16,026</u>	<u>29,287</u>
Depreciation			
At 1 April 2017	8,546	11,767	20,313
Charge for the year	1,178	2,608	3,786
At 31 March 2018	<u>9,724</u>	<u>14,375</u>	<u>24,099</u>
Carrying amount			
At 31 March 2018	<u>3,537</u>	<u>1,651</u>	<u>5,188</u>
At 31 March 2017	<u>4,715</u>	<u>1,999</u>	<u>6,714</u>

Faithworks Wessex
Company Limited by Guarantee
Notes to the Financial Statements *(continued)*
Year ended 31 March 2018

17. Debtors

	2018	2017
	£	£
Prepayments and accrued income	2,029	1,932
Other debtors	7,096	4,756
	<u>9,125</u>	<u>6,688</u>

18. Creditors: amounts falling due within one year

	2018	2017
	£	£
Accruals and deferred income	867	785
	<u>867</u>	<u>785</u>

19. Pensions and other post retirement benefits

Defined contribution plans

The amount recognised in income or expenditure as an expense in relation to defined contribution plans was £10,543 (2017: £8,699).

20. Analysis of charitable funds

Unrestricted funds

	At 1 April 2017	Income	Expenditure	At 31 March 2018
	£	£	£	£
Unrestricted Fund - General fund	13,617	109,481	(109,279)	13,819
Designated Fund - Projects	(4,082)	7,947	(9,454)	(5,589)
	<u>9,535</u>	<u>117,428</u>	<u>(118,733)</u>	<u>8,230</u>

Restricted funds

	At 1 April 2017	Income	Expenditure	At 31 March 2018
	£	£	£	£
Restricted Funds	<u>133,534</u>	<u>276,763</u>	<u>(294,682)</u>	<u>115,615</u>

Faithworks Wessex
Company Limited by Guarantee
Notes to the Financial Statements *(continued)*
Year ended 31 March 2018

20. Analysis of charitable funds *(continued)*

Restricted Funds are made up of the following:-

FOCUS. A restricted fund for the purpose of support of adult carers. Funded by local government. At the year end this fund had a balance of (£4,153) (2017: £2,232).

Bournemouth Homelessness. A restricted fund for the purpose of assisting the homeless in the area to improve their circumstances. At the year end this fund had a balance of £30,586 (2017: £37,563).

Poole Foodbank. A restricted fund for the purpose of running the food bank in the Poole area. At the year end this fund had a balance of £18,830 (2017: £13,981).

Money Matters. A restricted fund for the purpose of financial budget and debt counselling by volunteers. At the year end this fund had a balance of £12,207 (2017: £28,850).

Christchurch Foodbank. A restricted fund for the purpose of running the food bank in the Christchurch area. At the year end this fund had a balance of £15,348 (2017: £8,911).

Blandford Foodbank. A restricted fund for the purpose of running the food bank in the Blandford area. At the year end this fund had a balance of £9,707 (2017: £6,027).

Smile. A restricted fund for the purpose of support to lone parent families. At the year end this fund had a balance of £2,816 (2017: £8,077).

Wimborne Foodbank. A restricted fund for the purpose of running the food bank in the Wimborne area. At the year end this fund had a balance of £17,981 (2017: £15,296).

Dementia Action. A restricted fund for the purpose of training church members to support those living with Dementia. At the year end this fund had a balance of £2,023 (2017: £3,733).

Treasure. A restricted fund for the purpose of providing a secure place for female victims of domestic abuse. At the year end this fund had a balance of £2,761 (2017: £8,865).

Town Pastors CHP. A restricted fund for the purpose of funding Town Pastors who patrol the town centres on weekend nights to provide support to those in need. At the year end this fund had a balance of £7,510 (2017: £nil).

21. Analysis of net assets between funds

	Unrestricted Funds £	Restricted Funds £	Total Funds 2018 £	Total Funds 2017 £
Tangible fixed assets	291	4,897	5,188	6,714
Current assets	7,939	110,718	118,657	136,355
Net assets	<u>8,230</u>	<u>115,615</u>	<u>123,845</u>	<u>143,069</u>

Faithworks Wessex
Company Limited by Guarantee
Notes to the Financial Statements *(continued)*
Year ended 31 March 2018

22. Financial instruments

The carrying amount for each category of financial instrument is as follows:

	2018	2017
	£	£
Financial assets that are debt instruments measured at amortised cost		
Bank and cash	<u>110,399</u>	<u>130,452</u>

23. Operating lease commitments

The total future minimum lease payments under non-cancellable operating leases are as follows:

	2018	2017
	£	£
Not later than 1 year	6,885	8,490
Later than 1 year and not later than 5 years	–	710
	<u>6,885</u>	<u>9,200</u>

24. Related parties

Stephen Robinson, a trustee of the charity, is also Chief Executive Officer of Prama. During the year funding totalling £12,968 (2017: £6,865) was received from Prama.

Stephen Robinson and Benjamin Griffiths are also trustees of Hope in the Community Limited. During the year a donation of £2,250 (2017: £nil) was paid to Hope in the Community Limited.

During the year pastoral support services totalling £1,898 (2017: £1,636) were provided by His Glorious Ministries, an entity run by Jacqueline Leswell, a trustee of the charity.

Faithworks Wessex
Company Limited by Guarantee
Management Information
Year ended 31 March 2018

The following pages do not form part of the financial statements.

Faithworks Wessex
Company Limited by Guarantee
Detailed Statement of Financial Activities
Year ended 31 March 2018

	2018 £	2017 £
Income and endowments		
Donations and legacies		
Grants - organisations	261,291	252,992
Grants - individuals	<u>77,302</u>	<u>51,952</u>
	<u>338,593</u>	<u>304,944</u>
Charitable activities		
Income from charitable activities	<u>54,701</u>	<u>98,489</u>
Other trading activities		
Fundraising events	<u>476</u>	<u>886</u>
Investment income		
Bank interest receivable	<u>421</u>	<u>70</u>
Total income	<u><u>394,191</u></u>	<u><u>404,389</u></u>

Faithworks Wessex
Company Limited by Guarantee
Detailed Statement of Financial Activities *(continued)*
Year ended 31 March 2018

	2018	2017
	£	£
Expenditure		
Expenditure on charitable activities		
Fundraising costs & materials	7,975	11,319
Wages and salaries	242,733	216,625
Employer's NIC	9,122	7,351
Pension costs	10,543	8,699
Rent	18,846	18,461
Rates and water	350	435
Light & heat	907	1,363
Repairs & maintenance	14,989	4,043
Insurance	1,559	1,518
Other payroll costs	1,426	1,804
Motor/travel costs	10,487	10,935
Legal and professional fees	5,343	1,796
Telephone	3,209	4,009
Other office costs	1,134	765
Depreciation	3,786	4,743
Postage and stationery	6,734	6,678
Publicity	4,497	6,800
Computer costs	2,638	1,473
Staff training	420	3,784
Subscriptions	3,781	4,037
Gifts/grants paid out	30,041	16,034
Activity & management costs	31,485	58,614
Events	1,410	3,498
	413,415	394,784
Total expenditure	413,415	394,784
Net (expenditure)/income	(19,224)	9,605

Faithworks Wessex

Company Limited by Guarantee

Notes to the Detailed Statement of Financial Activities

Year ended 31 March 2018

	2018	2017
	£	£
Expenditure on charitable activities		
Charitable activities		
<i>Activities undertaken directly</i>		
Fundraising costs & materials	7,975	11,319
Wages/salaries	240,233	214,625
Employer's NIC	9,122	7,351
Pension costs	10,543	8,699
Bad debt provision	50	–
Gifts/grants paid out	30,041	16,034
Activity & management costs	31,485	58,614
Events	1,410	3,498
	<u>330,859</u>	<u>320,140</u>
<i>Support costs</i>		
Rent	18,846	18,461
Rates & water	350	435
Light & heat	907	1,363
Repairs & maintenance	14,989	4,043
Insurance	1,559	1,518
Other payroll costs	1,426	1,804
Motor/travel costs	10,487	10,935
Other professional fees	1,016	862
Telephone	3,209	4,009
Other office costs	1,134	765
Depreciation	3,786	4,743
Postage & stationery	6,734	6,678
Publicity	4,497	6,800
Computer costs	2,638	1,473
Staff training	420	3,784
Subscriptions	3,781	4,037
	<u>75,779</u>	<u>71,710</u>
Governance costs		
Wages/salaries	2,500	2,000
Accountancy fees	817	784
Legal and other professional fees	3,460	150
	<u>6,777</u>	<u>2,934</u>
Expenditure on charitable activities	<u><u>413,415</u></u>	<u><u>394,784</u></u>